



# FARM' IN

INCLUSION THROUGH  
SOCIAL FARMING



Co-funded by  
the European Union

European Project Co-funded by the Program Erasmus+ KA210- VET |  
with Reference Number: 2024-1-IT01-KA210-VET-000256203



# 1.11. European Social Fund+



# Objectivies

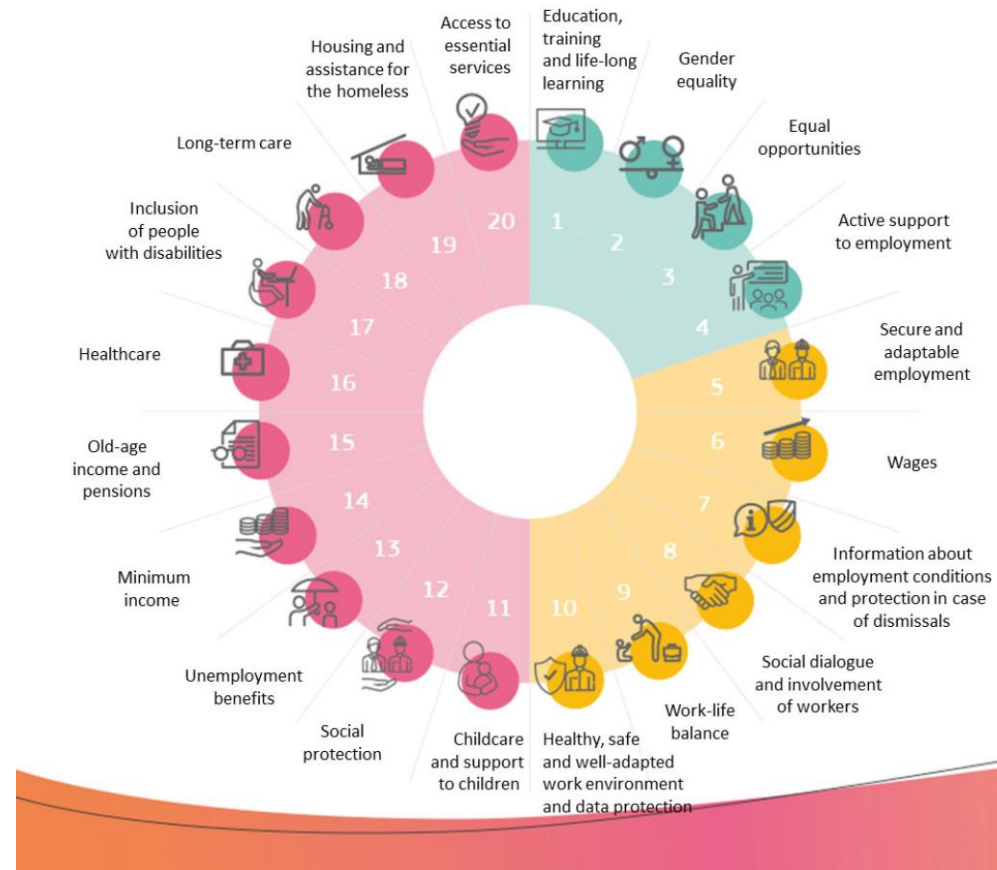
## European Social Fund+

The European Social Fund+ (ESF+) is the EU's main instrument for investing in people aimed at building a more social and inclusive Europe. It supports Member States to

- tackle the crisis caused by the coronavirus pandemic
- achieve high employment levels and fair social protection
- foster a skilled and resilient workforce that is ready for the transition to a green and digital economy

The ESF+ finances the implementation of the principles of the [European Pillar for Social Rights](#) through actions in employment, education & skills, and social inclusion.

The 20 principles of the European Pillar of Social Rights are the beacon guiding us towards a strong social Europe that is fair, inclusive and full of opportunity.



#SocialRights

Your social rights at a glance



## Different areas of intervention

ESF+ is a combination of four funding instruments that were separate in the programming period 2014-20: the European Social Fund (ESF), the Fund for European Aid to the most Deprived (FEAD), the Youth Employment Initiative, and the European Programme for Employment and Social Innovation (EaSI).



### **Preparing workers for the green and digital transitions**

The EU is investing around €65 billion in jobs and skills across Europe.



### **Boosting youth employment**

Member States with many young people neither in employment, education, nor training will invest at least 12.5% of their ESF+ resources to promote youth employment.



### **Tackling child poverty**

Member States most affected by child poverty will allocate at least 5% of their ESF+ resources to address child poverty.

## **Key benefits of the ESF+**



### **Supporting the most vulnerable**

All Member States must dedicate at least 25% of their ESF+ resources to social inclusion measures, such as community-based services, active inclusion measures and targeted support to marginalised groups like Roma.



### **Providing food and basic material assistance**

All Member States must allocate at least 3% of their ESF+ resources to provide food and basic material assistance or implement social inclusion measures for the most deprived.



### **Promoting social innovation**

The ESF+ invests in social innovation in the areas of employment, education, skills and social inclusion, both at the national level and through transnational partnerships.



### **Enhancing the capacity of social partners and civil society**

Member States facing challenges with involving social partners and civil society organisations will allocate at least 0.25% of their ESF+ resources to this aim.



# The ESF+ in Greece

---

- The EU will invest over EUR 5.3 billion in ESF+ funds in Greece to promote employment, skills upgrading (including for the digital and green transitions), quality and inclusive education and training, as well as high-quality and accessible social inclusion services.
- ESF+ investments will support the modernisation and increased effectiveness of labour-market institutions and education and training systems, as well as social and health policies. The employment measures provide opportunities for job seekers, with a focus on long-term unemployed, women, young people and those in active working age. Emphasis is given on ensuring inclusive education at all levels and aligning the vocational and education system with the needs of a dynamic labour market.
- ESF+ investments will contribute to improving the quality of life by increasing the availability of social, educational, healthcare and long term care services, with particular focus to marginalised communities and vulnerable groups, such as persons with disabilities, migrants and the Roma minority, children.
- The ESF+ in Greece is implemented via the national Human Resources and Social Cohesion Programme, as well as 3 sectoral and 13 regional programmes.



# The ESF+ in Italy

---

- The EU will invest EUR 14.8 billion in ESF+ funds in Italy for social inclusion measures and active labour market and training measures to boost youth employment under the [Youth Guarantee](#).
- To address the skills shortages and increase the flexibility of the labour market, Italy will invest in up-skilling and re-skilling of workers, and in empowering people for the green and digital transition. Substantive efforts will be undertaken to help the most deprived, in particular, to lift children out of poverty, in line with the [European Child Guarantee](#).
- Funding will also address the gender gap in the employment rate – which is the highest in the EU – by supporting female entrepreneurship, facilitating access to conciliation services, encouraging greater involvement of men in care duties, and promoting innovative corporate welfare solutions.
- Italy is committed to using these investments to achieve its EU's 2030 social targets for raising the national employment rate to 73%, adult participation in education to 60% and reducing the number of people at risk of poverty and social exclusion by nearly 3.2 million people.
- The ESF+ in Italy is implemented by 6 national and 21 regional programmes, with one other programme implemented through the Just Transition Fund (JTF).





# The ESF+ in Slovenia

---

- The EU will invest EUR 665 million in ESF+ funding in Slovenia, via two national programmes. for upskilling and lifelong learning to help people prepare for the green and digital transition, improve the working conditions of older workers by training employers and adapting workplaces, and enhance social inclusion. Young people with special needs will get support to access education and the labour market.
- Slovenia will also use some of its ESF+ funds to promote healthy and active aging and invest heavily in its long-term care system. Community living will be supported by investments in social and community services, recruitment of new staff and training, and modern educational programmes. Healthcare and mental health services – which are critical for the well-being of society, will be enhanced.
- The ESF+ will also help reduce social exclusion and the risk of poverty and fund projects that purchase food packages for disadvantaged groups at risk of poverty, including young people and children.



# Interventions and activities

People → Immaterial or intangible measures

Social innovation

- Training → vulnerable people and operators
- Social-working inclusion (guidance, training, internship, occupation, etc.)
- Health and social interventions → people and services
- Support for administrations

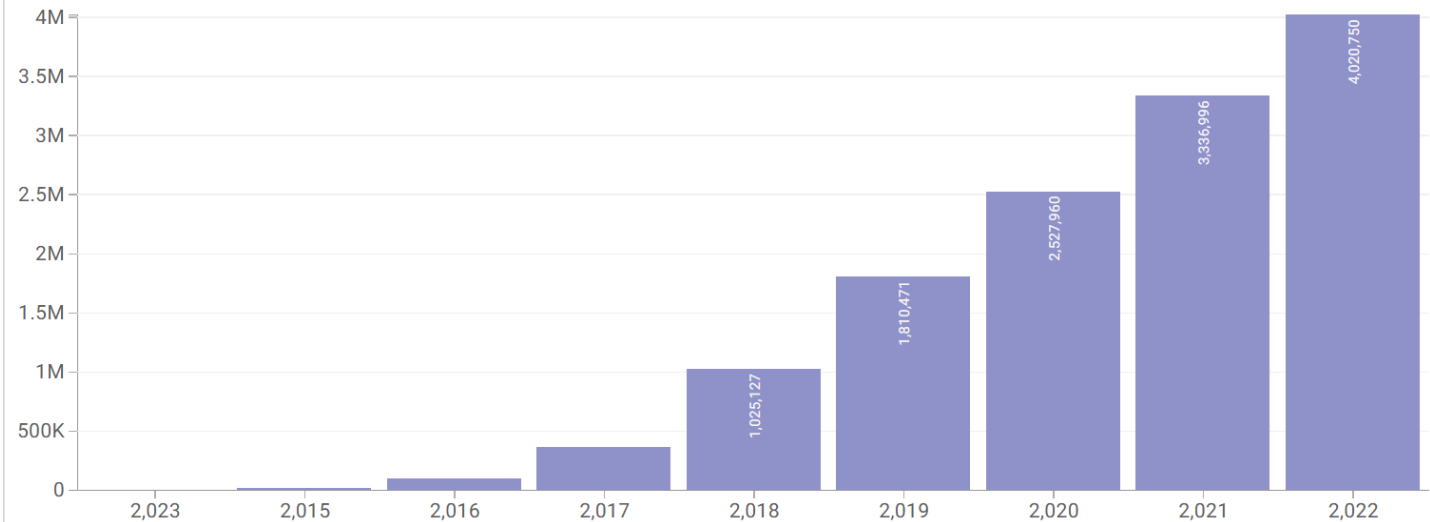
# ESF in the 2014-2020 period

Number of participants supported under two main priorities:

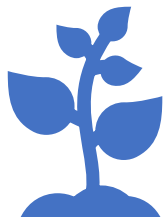
- Active and healthy ageing (investment priority 8vi);
- Enhancing access to affordable, sustainable and high-quality services, including health care and social services of general interest (investment priority 9iv)

## To be updated 2014-2020: Participants in ESF supported health care services

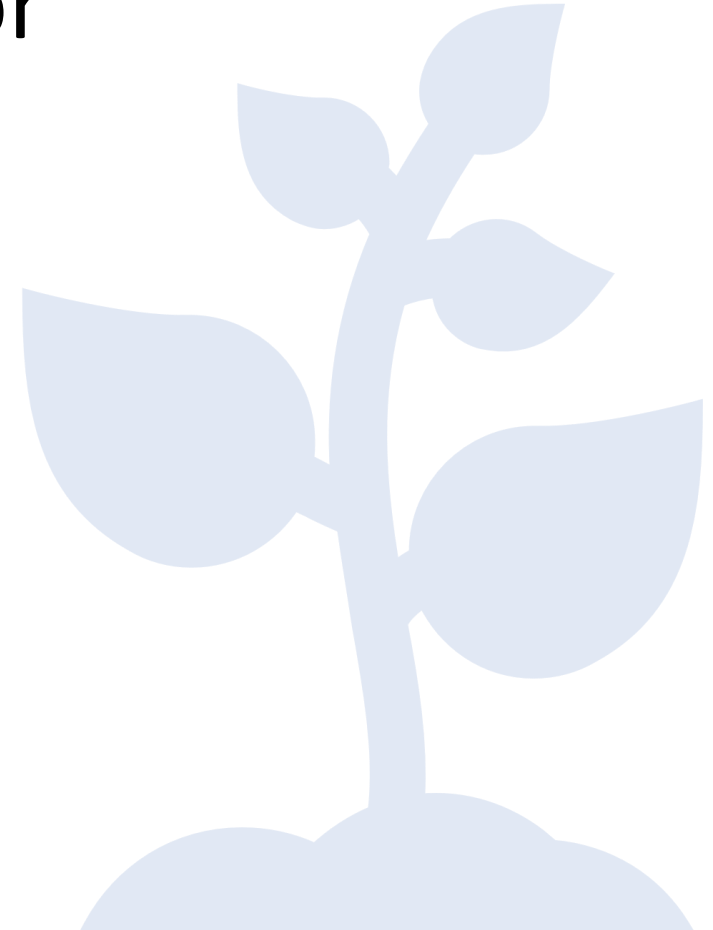
Priority 8vi concerns "Active and healthy ageing"; Priority 9iv concerns "Enhancing access to services, including health care and social services".



# Lazio Region: networks for Social Farming



- ✓ Significant experience in Social farming
- ✓ Previous experience of collaboration between local social and health services and social farms
- ✓ Regional organization: Social Health District  
→ local units
- ✓ Objectives: promote networks and implement initiatives



# Lazio Region: networks for Social Farming

Networks for the development of social farming for the working inclusion of disadvantaged people  
- Region Lazio PO FSE 2014-2020 -  
Axis II - Employment - Investment priority 9 i) Specific objective 9.1.



# An inclusive farming chain - Croatia

---

An inclusive farming chain is a project of the Society for Social Ecology Green Gold that helps address difficult access to the labour market and social exclusion for members of vulnerable groups.

The project aims to increase the employability of 45 vulnerable people from Sika, Petrije and Zagreb through the implementation of an integrated training programme for the cultivation of vegetables and edible plants.

As part of the project implementation, beneficiaries are provided with professional support services to integrate into working processes through which they improve life skills and pave the way for equal participation in society.





# Breaking Bars Farm – Portugal

- Breaking Bars Farm (BBF) is a program for prisoners, aimed at promoting the social and work inclusion of people deprived of liberty, through an integrated training program lasting 1 year (6 months of transversal training + 6 months of training for agricultural activity and entrepreneurship).
- In this project, which took place at Pinheiro da Cruz prison, training was an important practical tool in the acquisition of skills in the agricultural sector.





# How to access Structural funds



Read the ESF program of your country (region)



Identify the interventions that can support AS activities (training, guidance, internship, etc.)



Verify if you and your partners have the characteristics to access funds



Monitor the publication of calls for each intervention



Share the information with your partners and design the project



Apply the form with all the information and documents requested